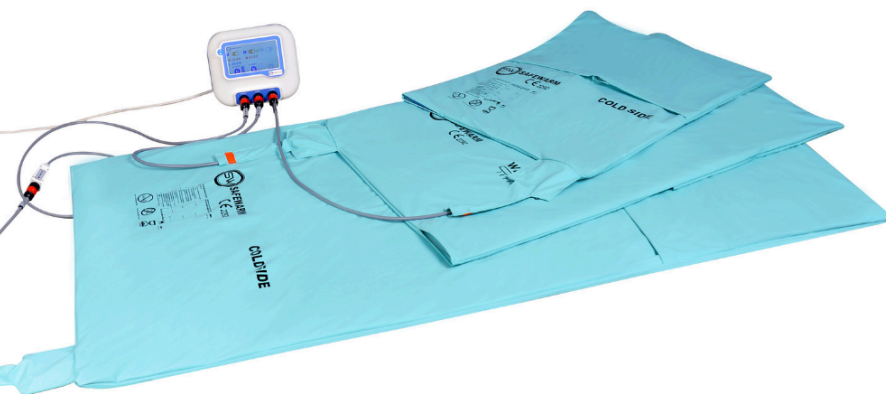


SAFEWARM PATIENT WARMING BLANKET

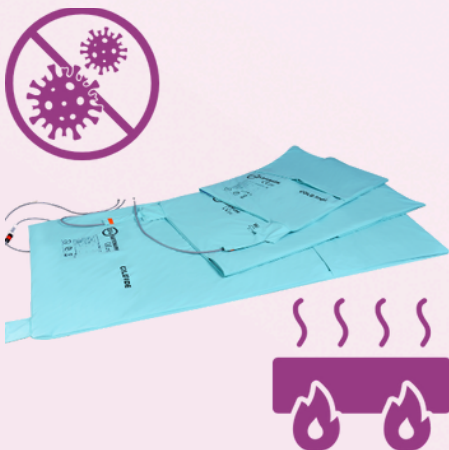
The Safewarm Patient Warming Blanket delivers controlled warmth to help patients maintain a stable and comfortable body temperature during surgery, reducing the risk of hypothermia.



The Safewarm Blankets can reach 37°C in just 5-7 minutes, offering fast, homogenous and reliable warming to patients that need their body temperature regulated.

There is an accuracy of 0.1°C when controlling the blanket, offering additional sensitivity and flexibility to health professionals when determining the best temperature for their patient.

Built-in sensors mean the blanket will automatically cut-off heat if it reaches a temperature of 42°C, ensuring it remains safe by avoiding overheating.



INFECTION CONTROL

Unlike forced air methods, the blanket uses conductive heat, eliminating air circulation around the patient. This helps preserve sterile fields and minimises the risk of airborne contamination.

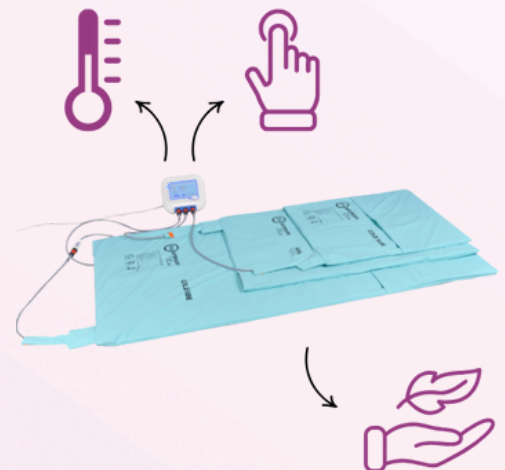
As a result, it's particularly well-suited for orthopaedic and plastic or reconstructive surgeries.



MULTI-CHANNEL CONTROL

The innovative control unit comes with three channels, meaning up to three blankets and/or mattresses can be operated at the same time.

This offers enhanced flexibility over patient warming configurations.



EASY TO USE

Designed for simplicity and efficiency, Safewarm offers user-friendly features that enhance efficiency. Key benefits include:

- LCD Touchscreen
- Lightweight Design
- Current & Target Temp. Display



DESIGNED TO BE SAFE

The blanket and controller each contain independent microprocessors that trigger both visual and audible alarms in the event of a fault, ensuring swift and effective response.

The blanket core is constructed from carbon fibre, allowing X-rays to pass through easily. This enables continuous patient warming during imaging procedures without interference.

The heating system operates at a safe, low voltage of 24V, significantly reducing the risk of electrical shock and enhancing patient safety.

EVERYTHING YOU NEED TO KNOW

Click the links below to access the Croyde Knowledge Hub

[How to Buy](#)

[Dimensions & Specifications](#)

[Delivery & Implementation](#)

[Warranty & Servicing](#)

[Cleaning Instructions](#)



CROYDE MEDICAL

Maternity Equipment Specialists

CONTACT US

Tel: 01367 241194

Email: info@croydemedical.co.uk

www.croydemedical.co.uk

Croyde Medical, Unit 7, Regal Way, Faringdon, Oxon, SN7 7BX